

# RAK

DESIGNED BY  
*FRANCESC RIFÉ*

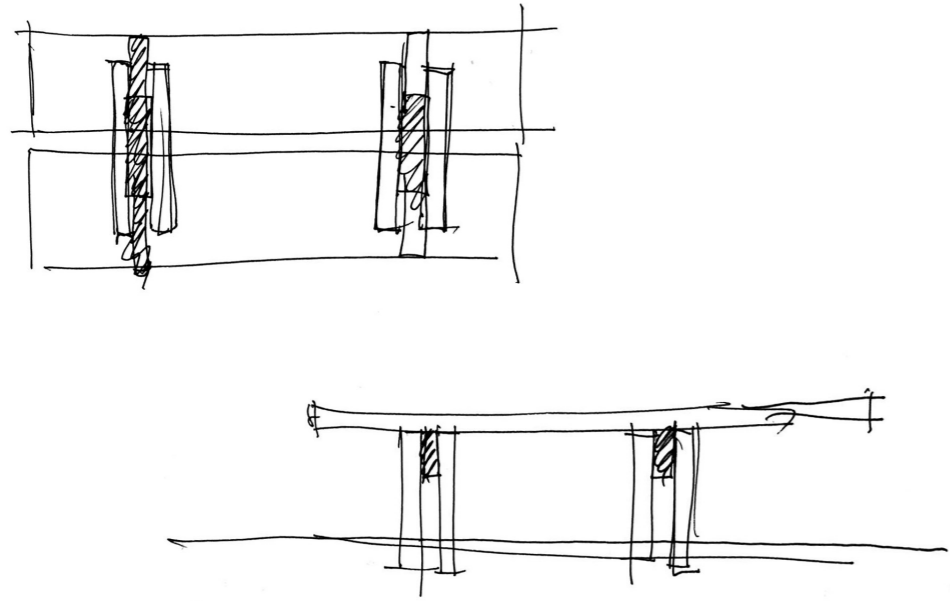


Francesc Rifé is the designer of Rak collection. Interiorist and industrial designer, he is influenced by minimalism and marked by a family history linked to craftsmanship. His work is articulated around spacial order and geometric proportion. Rifé directs a team of professionals from different fields of design and their national and international projects range from interiorism to industrial design, concept creation, installations, graphics and art direction.

F



# THE ESSENCE OF RAK

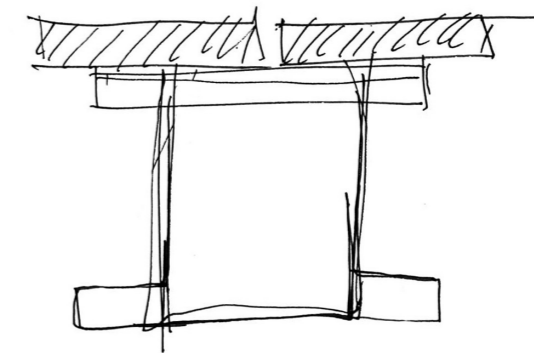


*Wood is the great star at Rak collection. The furniture pieces are built from different ash wood parts which are inserted between one another in a rationalist architectural narrative.*



# BALANCED *GEOMETRY*

Rak collections's furniture pieces are composed by voluminous parts with pure geometries. Squares, rectangles and circles which are disposed and dimensioned in such a way that, in spite of its heavy volume, a perfect balance in the resulting pieces is achieved. The hard angles resulting from superposing and intersecting these parts, made of natural or stained ash wood, define this furniture collection.



# VARIETY OF *FUNCTION*

*Rak collection offers auxiliary, bedside, and coffee tables available in four measures, as well as a console table and a desk. Multiple functions of a versatile design that will add personality to any interior space.*



One philosophy for six furniture pieces that are valid as a decorative element and as a functional one. In the case of the desk, the lower crossbar is shifted towards the back, instead of centered, in order to ensure a comfortable position of the user's legs. All pieces of the collection are manufactured by hand in MDF veneered in ash wood, and solid ash wood. Ash is available in natural colour or stained.





## *LITTLE TOUCHES*

Care in the design is also evident in the smallest details. Rak's top is divided in two boards with a four millimeter gap between them that offers lightness. The crossboards at the junction between structure and top, and at the bottom part, bring strength to the whole. The space between the vertical sides creates an interesting visual effect at the intersection with the crossboard.



Over these lines, Rak Ø45x50cm in natural ash. On the right, Rak 80x80x35cm in black ash.

Each piece in Rak collection is an assembly of different wooden parts meticulously joined together, creating a harmonious balance between volume and elegance with a refined aesthetic that references the past as well as the present. The natural pattern of ash wood adds a touch of warmth, enhancing the overall appeal. These well-crafted furnishings showcase the artistry of woodworking in a high-impact, full of personality design.



Rak 120x80x35cm in grey ash. On the right,  
Totem TV furniture by Gabriel Teixidó, in  
measurements 160x42x150cm and finishes taupe  
lacquer and microtextured black metal.





On this page, Rak 45x45x50cm in black ash. On the right, Rak desk in natural ash.







On the left page, Rak 45x45x50cm in natural ash. On this page, Rak 80x80x35cm in black ash and, in the corner, Rak 45x45x50cm in grey ash.



On the left, Rak 120x80x35cm in grey ash. Below, Rak 120x80x35cm in natural ash. On the right, Rak console table in grey ash.





On these pages, two Rak tables in measurement 80x80x35cm and natural ash finish.



On the left page, Rak Ø45x50cm in grey ash. On the right, Rak desk in natural ash.



On the left page, Rak console table in natural ash.  
On this page, Rak desk in black ash.



On the left page, Rak 45x45x50cm. On the right, Rak console. Both in grey ash.

# MEET THE *TABLES*

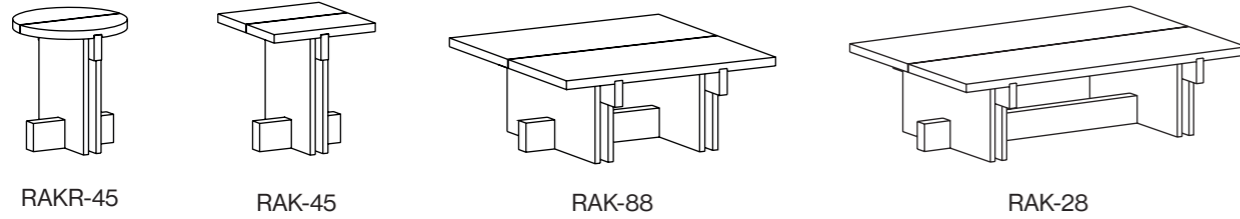
---



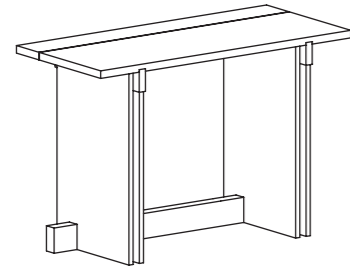
Left to right: Rak 45x45x50cm grey ash, Rak 80x80x35cm natural ash, Rak Ø45x50cm black ash, and Rak 120x80x35cm grey ash.

# RAK IN A NUTSHELL

## TABLES MESAS

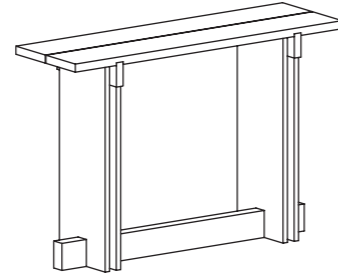


## DESK



RAKE-25

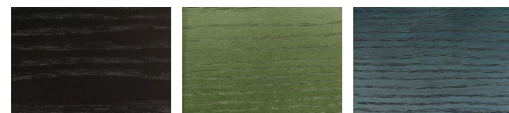
## CONSOLE TABLE



RAKC-23



Fresno natural  
Natural ash    Fresno ceniza  
Grey ash    Fresno tostado  
Toasted ash



Fresno negro  
Black ash    Fresno verde  
Green ash    Fresno azul  
Blue ash

The collection is composed by four tables in different measures, a desk and a console table. As for the finishing, the totality of the furniture piece is finished in ash wood or ash veneer, available in six different colours.

