

A+S WORK

Ergonomics for everything and for everyone



ACTIU

THE FIRST ALL-IN-ONE CHAIR

A+S WORK combines two of the existing tilting systems on the market in the same chair, premiering our patented synchro mechanism.

Feel supported by innovation.

A pioneer in offering a simultaneous tilt between the seat and back, A+S Work premieres a patented system.

Its sensitive tension control is the closest thing to a chair that has been designed for the user's postural health. For this reason, it offers four different locking positions depending on the user's unique needs. All without losing the feeling of fluidity, flexibility, and comfort.



ACTIU

This chair - and the new platform created for it - is the result of Actiu's more than 20 years of experience manufacturing professional chairs. In line with the brand's circular economy philosophy, thermoplastics have been used in the whole product: the back, seat, swivel base, arms, as well as the different accessories offered by the new chair. In this way, the life cycle of A+S Work is extended as its parts can be replaced. After many years of use, all the components can be recycled.

Design: Alegre Design



Marcelo Alegre



ERGONOMICS FOR EVERYTHING. ERGONOMICS FOR EVERYONE.

A+S Work introduces its soft-tech concept for all users and all office environments. Its high-grade ergonomics and high performance in terms of its configuration and adaptation possibilities make it a high-performance office chair that is perfect for any user and any setting.



IT LOOKS AFTER YOU







**Sit back and relax.
Enjoy work.**

The various configuration and adaptation possibilities make A+S Work a versatile solution that is capable of responding to the greatest range of users postural needs.





Cradled by ergonomics

**Sit back and relax.
Enjoy work.**

The various configuration and adaptation possibilities make A+S Work a versatile solution that is capable of responding to the greatest range of users postural needs.

ACTIU



The back of the A+S Work chair draws a curve that creates a feeling of fluidity and movement, embracing the user with a feeling of pure comfort. A pleasant sensory experience that allows the user to concentrate in whichever seat back position they choose.

A+S Work offers 2D and 4D interchangeable arms to accommodate the user in different situations or when sat at different distances from the desk. Unlike other Actiu chairs, the arms can be fitted retrofitted.



ACTIU

A chair at the forefront of ergonomics



The height-adjustable, swivel head-rest of A+S Work can be adapted to the height and position of each user, reducing the possible postural strain that can be caused by office work.

**An add-on for
your comfort**





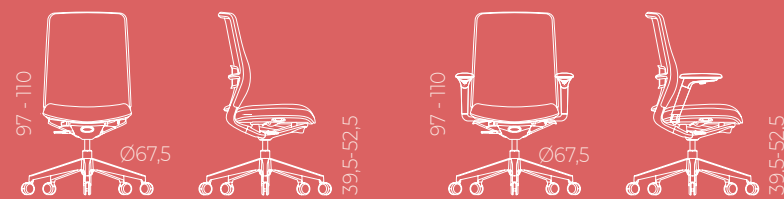
A+S Work offers the possibility of adding an optional coat hanger on the back for jackets, backpacks, or bags.

Experience the design
through a wide range
of textures and colors



A+S WORK by ALEGRE DESIGN

The new ACTIU soft-tech concept from.
Ergonomics for everything, for everyone.



Mechanism patented and registered as a Utility Model in the Official Bulletin of Industrial Property.



4 Seat travel - Traslá

The horizontal displacement of the seat, by means of the trasla movement with autoreturn, makes it possible to adjust the distance of the seat from the backrest, so as to adapt it to users with different anthropometric characteristics.



5 Haptic backing

It is designed with a flexible frame (PP+PV), which allows it to produce a haptic response (it has to do with touch, as if it were embracing you). This frame is designed to give the product a synchronized tilting between seat and backrest.



6 Sistema Airflow Comfort

The seat has been designed with air chambers, to improve comfort, flexibility and pressure distribution for any user, which together with reducing the thickness of the seat foam, we managed to increase the levels of ergonomics.



7 Lumbar support

A+S Work has a lumbar support adjustment system made of flexible and adaptable material in black finish, with a maximum stroke of 7 cm, located on the back of the chair. The use of elastic fabrics combined with the adjustment of the lumbar support allows total adaptation to each user, reinforcing the tension in the points where the weight is greater.



8 Arm height adjustment

A+S Work has interchangeable 2D and 4D arms with polyamide cane. The arm is height adjustable by pressing the button located under the armrest. It has 12 locking positions.



9 Distance between arms

The adjustment of the distance between arms provides the chair with the possibility of obtaining a comfortable space for the user in everyday life. Maximum stroke of 2.5 cm per arm (total width +5 cm). Mechanism with Allen key to move the arm.

Functions

A+S WORK



1 All in One" self-weighting synchro mechanism

A+S Work has a synchronized tilting system between seat and backrest for greater comfort and correct ergonomics, 24 degrees and 6 degrees. This backrest is equipped with a SYNCRO "All in One" mechanism, where we can recline in four positions and block the one we are most interested in for our postural health. Adjustment range from 50 kg to 130 kg.



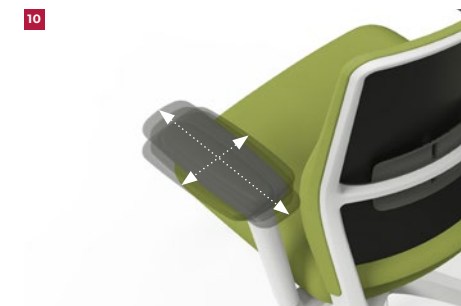
2 Negative angle - Optional

This chair has a negative angle of -5° (optional), which allows us to maintain a posture closer to correct ergonomics. In addition, it allows us to sit up more easily. It is easily activated from the lower part of the seat.



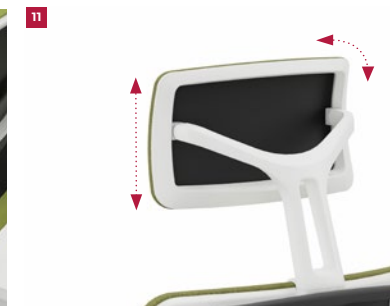
3 Seat height adjustment

The seat height is adjusted by means of a gas pump. The mechanism is activated by pushing up the handle on the right hand side of the user, which allows for correct sitting and posture of the legs and the user.



10 Soft touch armrests

The armrests of the 2D and 4D armrests are made with a soft touch PAD in black finish. In the 4D arm model, it allows horizontal and vertical movement, which allows the chair to accommodate any situation, distance from the desk or position that we can maintain more comfortably.



11 Headrest - Optional

The tilting and height-adjustable headrest will allow us to adapt to any height and position of the head, trying to always leave it at rest to avoid tension.



12 Hanger - Optional

It has an optional integrated hanger at the back for easy and convenient storage of the jacket.